


User manual

- Safety measures during the operation of the security system
- General description
- Specifications
- Light and sound indication
- Operation modes
- GSM control commands
- Change settings
- Registration of tags and smartphones
- Registration of StarLine R4 code relay
- Emergency security deactivation
- Change of owner authorization code
- Owner authorization code

Safety measures during the operation of the security system

Prior to operation of the security complex carefully read this manual paying special attention to the sections marked () and determine whether this security complex is suitable for your car, for which following the car manufacturer's requirements and the car operation manual.

If you could not determine whether this security complex can be installed on the car, return it to the seller within 14 days after purchase.

The security complex is a complicated technical device implying connection to the car circuits related to engine operation.

The security complex should be installed only by specially trained qualified specialists.

Mounting, programming, maintenance, repair and disassembly-assembly of the security complex shall not be carried out by persons who are not qualified specialists and have not passed training and knowledge test in safety rules.

During security complex parameter programming, the set parameters should not contradict the requirements of the car operation manual.

The user bears full responsibility for damage incurred to people, animals and assets as a result of inappropriate use of the security complex or use with violations of the safety requirements specified in this manual.

The manufacturer shall should not be responsible for losses and injuries caused by failure to observe the safety rules and requirements outlined in this manual.

To avoid possible misunderstandings, keep the documents enclosed to the security complex at sale. Check filling-in of the warranty slip, include the date of sale and seller's stamp. If there is no sale (purchase) date, the warranty period is counted from the date of security complex manufacture.

The service life of the security system is 5 years, provided that the product is installed and operated in accordance with operating instructions, installation and wiring diagram.

If your security complex has a remote key or a wireless tag:

- Do not carry the remote key or tag on the same bundle with the car keys
- Always switch over the complex to the service mode when handing the car over for maintenance or washing. Do not hand tags and remote keys over to third parties to prevent unauthorized access to security functions
- Do not leave remote key or tags in areas accessible to children and animals
- Do not let liquids ingress the remote key
- If the remote key display shows an icon warning about remote key battery discharge, take timely measures to replace the battery.
- Store the spare battery in the car in the factory packing

Mandatory safety measures during use of the engine starting function

It should be borne in mind that the car is a source of extra hazard.

Before security complex operation, carefully study the measures for safe use of the function of remote or automatic engine starting outlined below:

1. Always park the car on an open, well ventilated area;
2. Always apply the car's parking brake, which shall be operable and prevent car movement;
3. Leaving the car, be sure to set the automatic transmission control lever to the «PARK» position, and the manual gearbox changeover lever – to the neutral position;
4. If your car has a manual gearbox, prior to activating the function of remote or automatic engine starting, be sure to perform the procedure of preparation for engine starting – «program neutral»;
5. Never hand over the security complex control remote key to children and other persons without their preliminary study of the operation manual;
6. Before activating the function of remote or automatic engine starting:
 1. make sure the car is operable;
 2. make sure there is a sufficient amount of fuel, oil, cooling fluid etc;
 3. set the operation parameters of the passenger compartment heater (air conditioner), window heating and other accessories to the required levels;
 4. set the passenger control ventilation regulator to air circulation, which will allow more efficient warming or cooling of air in the car.

Safety precautions during charging of your car's storage battery

Remember that any battery charging process implies supply of voltage exceeding the rated 12 V to the storage battery and accordingly to the car circuit, which may damage the car electronic equipment and additional installed equipment in your car.

Do not use charging and starting/charging devices for storage battery charging directly on the car without disconnecting the storage battery terminals from the car circuit in the following modes:

- rapid charging by increased current («boost» or similar modes)
- various START modes intended for engine starting
- in the storage battery 24 V charging mode

Never use starting and charging devices for engine starting without a connected storage battery and with connected inoperable storage batteries (short circuits in banks, breakage of plates etc.)

Never use inoperable charging devices, 24 V charging devices and devices not intended for storage battery charging, e.g., welding invertors.

All the aforesaid devices and modes may cause uncontrolled supply of increased voltage over 25 V and up to 60 V to the car circuit and cause failure of the electronic components of the security complex and car equipment.

The light-up method should not be used for storage battery charging. Even the described «safe» light-up methods are safe only for the «donor» car. Connection and disconnection of a fully discharged or inoperable storage battery on your car with the engine operating may cause failure of the electronic devices of your car and the car alarm due to a short circuit or surges of increased voltage occurring during storage battery connection and disconnection.

If the aforesaid devices and modes are used, the car owner shall be responsible for damage of the electronic equipment.

Observe the technology for safe storage battery charging!

Before charging, the storage battery terminals shall be disconnected from the car circuit. After that the storage battery charging process can be started. After charging, connect the storage battery to the car circuit.

This is necessary because without measuring devices you cannot determine storage battery operability or status and the reason of its discharge (internal short circuits or breaks). Any connection of the charging device to an inoperable storage battery causes the risk of damage of the car electronic equipment and the security complex by increased voltage.

General description

Security telematic complexes **StarLineS96** and **StarLine S66** (hereinafter the complex) are intended for vehicle protection from theft and armed assault. Authorization of the owner occurs as a result of wireless exchange between the tag (or smartphone) and the main unit using the Bluetooth Smart (BLE) protocol using an algorithm that is protected from interception at the time of device registration. Use the tag or a smartphone supporting the BLE protocol and registered in the complex using the StarLine mobile application for authorization.

The complex is controlled by SMS commands, voice menu, wireless tag, from the StarLine mobile application or from the personal account on the website starline.online. To enter the personal account use the login and password given on the owner's plastic card included in the delivery set.

The functions of automatic and remote engine starting are available for the **StarLine S96** complex.

Main advantages:

- operation in the «Slave» mode (security mode activation or deactivation using the factory car remote key);
- driver identification by means of the wireless tag or smartphone via the Bluetooth Smart protocol;
- connection of wireless underhood unit StarLine R6 for control of the hood locks, horn and engine blocking;
- additional owner authorization by means of a wireless tag, smartphone or entry of the secret code by means of the factory buttons;
- a dialogue code of StarLine control with individual 128 bit encryption keys, guaranteeing reliable protection from all known code grabbers;
- the possibility to install the 2CAN+2LIN module for reception of statuses and control via the CAN bus;
- remote and automatic engine starting (for StarLine S96);
- temporary deactivation of the standard immobilizer using the iKEY technology (via the digital CAN and LIN buses);
- the service button combined with the LED indicator of system status;
- universal reconfigurable outputs/inputs;
- the special StarLine Master program, used for individual setting of the complex depending on owner's wishes and car's peculiarities.

The plastic card

Login*	Code of emergency security deactivation
<input type="text"/>	<input type="text"/>
Password*	Service code
<input type="text"/>	<input type="text"/>
<small>*The login and password for entering the personal account on the website starline.online (with GSM-module installed)</small>	<input type="text"/>
Technical support phone, toll free in Russia	8-800-333-80-30

The delivery set includes a plastic card containing the following data:

- **Login and password** — the user's personal account on the website starline.online where security complex control and parameter changing are available.
- **Code of emergency security deactivation** — the code is given on the owner's plastic card. It is used for emergency security deactivation.
- **Service code** — the code is given on the owner's plastic card. It is used for entry in the StarLine Master application.

ATTENTION! Do not tell the code of emergency security deactivation to anybody! Remember that a malefactor, knowing the code, may deactivate the protective functions.

The tag

The presence of a tag depends on the set of the complex



The tags, which are included in set, are initially in transport mode, in which they are disabled! Pressing the tag button in this mode will be indicated by the green and red flashes of the built-in LED.

Before operating, it is necessary to press the tag button several times before changing the

color of the flashes to green.

As the tag, you can use a smartphone that supports the Bluetooth Smart protocol. A smartphone and the tag equivalent to the functionality when used for additional authorization of the owner in the "Free Hands" mode and "Slave" mode.

Complex control

Duration of pressing the tag button:

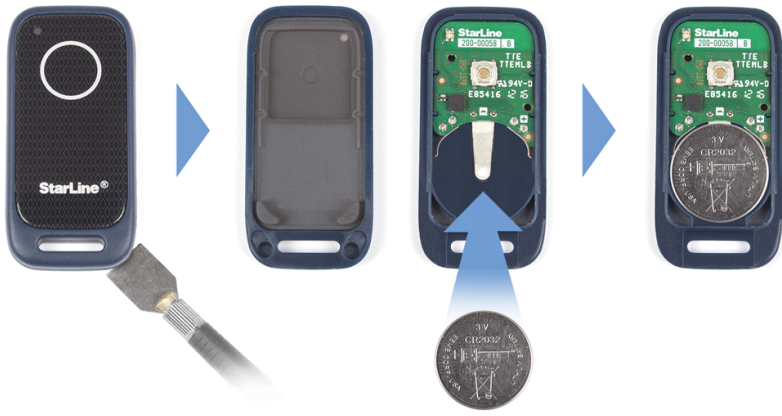
- short — press and release the button, then a flash corresponding to the current mode of operation will follow;
- long — hold the button until the LED flashes. The duration of depression can be of two levels:
 - 1 level — hold the button until a long flash of the LED corresponding to the current mode of operation appears;
 - 2 level — press and hold the tag button, followed by two short flashes and one long one, and again a series of short flashes — release the button.

Command	Duration of pressing
Arm / Disarm	1 short
Enable / Disable «Anti-hijack by the tag»	long (1 level)
Enable / Disable Service mode	long (2 level)

Replacing the tag's battery

If the tag's battery is discharg, then when the ignition ON 3 sounds of the buzzer will sound and an SMS will be sent to the owner number. We recommend that you replace the battery as soon as possible.

To replace the battery with a neatly flat metal or plastic object (metal ruler, thin plastic) open the tag body and, observing the polarity (as pictured in the photo), install the battery in the compartment. Before closing the tag body, install a waterproof seal between its parts. After installing the battery in the tag, the complex is ready for operation.





Specifications

Parameter	Value
Radio exchange protocol	Bluetooth Smart
Interfaces	<ul style="list-style-type: none">• 2 CAN• 2 LIN• 1 universal code bus StarLine Bus• 1 USB• 18 reconfigurable channels:• 17 outputs of OC (open collector) OK -0,2A• 2 outputs 2A• 3 positive inputs• 3 negative inputs• 1 universal input• a connector for the engine temperature sensor• a connector for the valet button
Supply voltage	8-16 V
Current consumption	15,2 mA
Operating temperature range	from -40 to +85 °C
Tag protection	IP67
Overall dimensions of main unit	106x63x17 mm
Weight	63 g

Light and sound indication

The security complex informs about its status by means of sound (horn) and light signals (turn signals):

-  — short signal;
-  — long signal.

Event	Light signals	Horn
Security activation		
Security activation with security zone breach		
Security activation with deactivation of «Hands free»		
Security activation with deactivation of «Hands free» mode with security zone breach		
Security deactivation		
Security deactivation (one of the zones was violated in the security cycle)		
Alarm	30 s	30 s
Warning level alarm		
Panic	10 s	10 s
Exit from service mode		

Operation modes

Security modes	Security on
	Security off
	Alarm
	Panic
Additional modes	«Slave»
	Hands free
	Service mode
	Device registration mode
	Telematic setting mode

The security modes protect the car against theft.

The additional modes are intended for setting of the complex parameters (telematic setting mode), adding of new devices (device registration mode), deactivation of protective functions for car handover for maintenance (service mode) and convenient complex control («Slave» mode, «Hands free» mode).

«Security on» mode

The following zones are monitored in the «Security on» mode: ignition, doors, trunk, hood, shock sensor, tilt sensor, movement sensor, additional sensor. If a zone is violated, the complex will set to the «Alarm» mode.

Security activation is performed only with the ignition off.

If a security activation command is sent with the ignition on, only closing of the central lock will be performed.

Security activation is performed by one of the following methods:

- by SMS-command **11**;
- by command **11** from the voice menu;
- from the StarLine mobile application;
- from the personal account on the website starline.online;
- by activation of standard system security in the «Slave» mode;
- in case of tag loss or touch of the door handle sensor in the «Hands free» mode;
- by single pressing on the tag button in the «Security off» or «Alarm» mode.

The complex will confirm successful security activation by one sound signal and one flash of light emergency alarm.

If the doors, hood, trunk are not properly closed, the parking brake is not tightened, the brake pedal is pressed or one of the limit switches of the doors, hood, trunk is faulty (constantly closed), the complex will warn thereof by 4 sound signals and 4 flashes of light signals.

Restore the violated security zone and check presence of a single confirmation signal on switchover to the security mode.

«Security off» mode

Security deactivation is performed by one of the following methods:

- by SMS-command **10**;
- by command **10** from the voice menu;
- from the StarLine mobile application;
- from the personal account on the website starline.online;
- deactivation of standard system security («Slave» mode);
- in case of tag detection or touch of the door handle sensor («Hands free» mode);
- by single pressing on the tag button in the «Security on» mode.

Successful security deactivation will be confirmed by 2 sound signals and 2 light signals. If the «Alarm» mode was activated during security, 3 sound signals and 3 flashes of light signals will follow.

After complex security deactivation, the remote key screen will display all the events which occurred during the security.

After security deactivation, if no actions are taken, the complex will automatically set to the «Security on» mode and close the central lock in 30 seconds.

«Alarm» mode

The «Alarm» mode is activated at violation of any zone in the «Security on» mode. The complex will switch on sound alerting by the horn and light emergency alarm for 30 seconds and will notify the owner (telephone call, SMS-message, notification in the mobile application). If the zone is not restored, the complex will repeat the alarm cycle once more.

If a warning zone is violated, 3 light signals and 3 long horn signals will follow.

The «Alarm» mode is reset without security deactivation by a short pressing on tag button.

The maximum number of zone actuations is limited to 8 repetitions per 1 security cycle.

«Panic» mode

The «Panic» mode is intended to ensure safety of the owner and car.

This mode is activated by owner's command by SMS-command **19**. Upon command reception the complex activates sound alerting by the horn and emergency light alarm for 10 seconds to attract the attention of nearby persons.

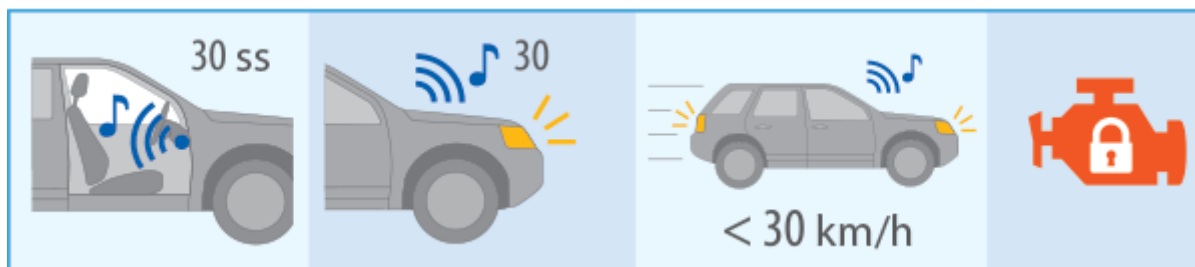
«Anti hijack» mode

The «Anti hijack» mode is intended for driver protection against assault during driving.

The mode is activated by one of the following methods:

- by SMS-command **31**;
- by command **31** from the voice menu;
- from the StarLine mobile application;
- from the personal account on the website starline.online.

Upon command reception the complex will issue warning signals of upcoming engine blocking by the horn and light emergency alarm for 30 seconds. At speed decrease below 30 km/h the engine will be blocked.



Exit from the «Anti hijack» mode and engine unblocking is performed by one of the following methods:

- by SMS-command **30 XXXX**, where xxxx is the code of emergency security deactivation is given on the owner's plastic card;
- by entering the code of emergency security deactivation given on the owner's plastic card, by means of the service button;
- from the personal account on the website starline.online. It is necessary to enter the code of emergency security deactivation given on the owner's plastic card.

Operation of the «Anti hijack at tag loss» mode is described in the electronic manual on the website help.starline.ru.

«Slave» mode

The «Slave» mode allows for complex control by means of the standard alarm remote key.

In this mode, additional owner authorization by presence of the tag is used. At deactivation of standard alarm security, the complex checks presence of the tag in the identification zone. If the tag is found, car security is deactivated.

If the tag is not found within 10 seconds, the complex will set to the «Alarm» mode.

«Hands free» mode

Use the wireless tag or smartphone for the «Hands free» mode .

The «Hands free» mode is intended for automatic control of security activation/deactivation according to tag presence.

When the tag is present near the car, security deactivation is performed automatically. When the tag disappears from the visibility zone, the complex sets to the «Security on» mode.

The «Hands free» mode can be activated or deactivated by SMS-command (**71** or **70** respectively) a command from the voice menu, from the mobile application or personal account on the website starline.online.

Service mode

The service mode is intended for temporary deactivation of security functions and prohibition of access to complex settings. It is recommended for the maintenance period.

The service mode can be activated only from the «Security off» mode near the car.

Switchover to the service mode is performed by one of the following methods:

- holding of the tag button for 5 seconds;
- by SMS-command **51**;
- by command **51** from the voice menu;
- from the StarLine mobile application;
- from the personal account on the website starline.online.

Switchover to the service mode will be confirmed by yellow indication of the tag LED.

In the service mode, transition to the other additional modes is prohibited!

Exit from the service mode is performed by one of the following methods:

- holding of the tag button for 5 seconds;
- by SMS-command **50**;
- by command **50** from the voice menu;
- from the StarLine mobile application;
- from the personal account on the website starline.online;

«Drive prohibition» function

Use of the «Drive prohibition» function prohibits driving without additional owner identification.

Additional authorization is performed by entering the code of owner authorization using the standard car buttons (for instance, the multimedia control buttons on the steering wheel, window raiser control buttons) at each security deactivation. The code is entered **with the ignition switched-off**.

If the owner authorization code is not entered, then if an attempt at driving is made, the engine will be blocked for 1 minute or until entry of the owner authorization code

«Engine starting» function (only for StarLine S96)

The starting function allows for remote and automatic car engine starting/stopping.

Preparation of a car with manual transmission for remote and automatic engine starting

Before engine starting, perform the procedure «program neutral»:

- apply the parking brake with the engine operating. The LED on the service button will light up;
- take the key out of the ignition lock. The engine will continue operating;
- leave the car, close the doors, trunk, hood and send the “Security activation” command. The engine will be stopped;
- the complex will set to the security mode;
- the «N» pictogram will appear on the StarLine mobile application or personal account on the website www.starline-online.ru;
- the complex is ready for remote and automatic engine starting.

If the door is opened or ignition is switched on after fulfillment of the «program neutral», remote and automatic engine starting will be canceled until the next execution of the «program neutral» algorithm.

Preparation of a car with automatic transmission for remote and automatic engine starting

Make sure the automatic transmission selector is in the «Parking» position.

Engine starting

Remote engine starting is performed by one of the following methods:

- by SMS-command **21**;
- by command **21** from the voice menu;
- from the StarLine mobile application;
- from the personal account on the website starline.online.

Automatic engine starting can be performed according to one of the conditions:

- according to temperature value. Engine starting at engine temperature decrease below the specified value.
The temperature value is set in the StarLine application or in the personal account on the

website starline.online;

- according to value of storage battery voltage. Engine starting at storage battery voltage decrease.

The voltage value is set in the StarLine application or the personal account on the website starline.online;

- periodic. Engine starting with the preset operation period after the preset recurrent time interval.

The interval and period are set in the StarLine application or the personal account on the website starline.online;

- by alarm clock. Engine starting at the preset time.

Engine starting schedules are set in the StarLine application or the personal account on the website starline.online.

The minimum time of engine operation at remote starting is 10 minutes. It can be changed in the personal account on the website starline.online or in the StarLine mobile application.

Extend engine operation by SMS-command [21](#), command [21](#) from the voice menu, command from the StarLine mobile application or from the personal account on the website starline.online

Automatic engine starting will not take place if less than 1 hour has passed after the last start or the previous automatic start has failed.

Upon drive completion, automatic engine starting is possible not earlier than 5 minutes after engine stopping.

Engine stopping

The engine is stopped if:

- the owner sent a command (SMS-command [20](#), command [20](#) from the voice menu, command from the StarLine mobile application or from the personal account on the website starline.online);
- the “Alarm” mode is activated;
- the car has started moving;
- the hood is open;
- the parking brake is off (for cars with manual transmission);
- the automatic transmission selector was switched over from the «Parking» position (for cars with automatic transmission);
- the brake pedal is pressed.

Car driving continuation after remote engine starting

To continue driving the car, without stopping the engine after remote starting, do as follows:

- **for cars with ignition lock:**
 - deactivate complex security;
 - insert the key into the ignition lock, turn it to position «Ignition on» and start moving;
 - the LED on the valet button will go out at movement start, pressing of the brake pedal or parking brake release;
- **for cars with START/STOP button:**

Several options are possible depending on the car and complex connection method:

- **first variant (*):**
 - deactivate complex security;
 - hold the brake pedal for 3 seconds;
 - the LED on the service button will go out, after which movement can be started (the START/STOP button need not be pressed);
- **second variant (*):**
 - deactivate complex security;
 - press the START/STOP button 1 or 2 times (*);
 - the LED on the service button will go out, after which movement can be started.

(*) Ask the installation specialist during mounting about the connection method of your complex and the operation algorithm.

Function «Engine starting preheater»

The function allows for engine preheating before starting. The starting preheater can be controlled both in the manual and automatic mode.

Manual mode

In the manual mode the starting preheater is switched on/off by a command.

The starting preheater can be switched on by one of following methods:

- by SMS-command **221**;
- from the StarLine mobile application;
- from the personal account on the website starline.online.

Time of preheater operation in this mode is 20 minutes. It can be changed in the personal account on the website starline.online or in the StarLine mobile application.

If the starting preheater has normal settings, differing from those set in the personal account, operation time may differ from the specified one.

Operation can be prolonged by sending a repeated command for starting preheater switch-on.

The starting preheater can be switched off by one of following methods:

- by SMS-command **220**;
- from the StarLine mobile application;
- from the personal account on the website starline.online.

Automatic mode

The automatic mode is activated by the installation specialist during complex setting after mounting.

In the automatic mode the starting preheater is switched on before operation of engine remote and/or automatic starting. If engine temperature before remote or automatic starting is less than specified, the starting preheater will be started. The engine will be started after engine warm-up to the preset temperature (during automatic starting) or upon expiry of the preset time.

The starting preheater is switched off upon expiry of the specified time or reaching of the switch-off temperature threshold.

Time of preheater operation in this mode is 10 minutes. Operation can be prolonged by manual sending of a repeated command for starting preheater switch-on.

Operation time and switch-off temperature threshold of the starting preheater can be changed in the personal account on the website starline.online or in the StarLine mobile application.

Function «Turbotimer»

Use the function «Turbotimer» for turbocharged cars for engine turbine cooling.

The "Turbotimer" function is activated by a installer during installation.

Activate the function as follows:

- apply the parking brake with the engine operating. The LED on the valet button will light up;
- take the key out of the ignition lock. The engine will continue operating;
- leave the car, close the doors, trunk, hood and activate the "Security on" mode;

- the engine will be stopped when the turbine cools down.

Turbine cooldown time is calculated automatically and depends on engine speed before the drive end.

The maximum turbine cooldown time is 5 minutes.

GSM control commands

Complex control by means of GSM commands is only possible if the GSM module is available.

The telephone number, from which the first call to the complex number was made, will be recorded automatically as the owner's main number. All commands from this number are sent without a GSM-password. To send commands from other numbers, a password shall be entered in the beginning of the command text (for instance, send the following SMS-message for security activation "1234 11", where 1234 — GSM password, 11 — command number).

The GSM-password is set from the owner's main number at the first call.

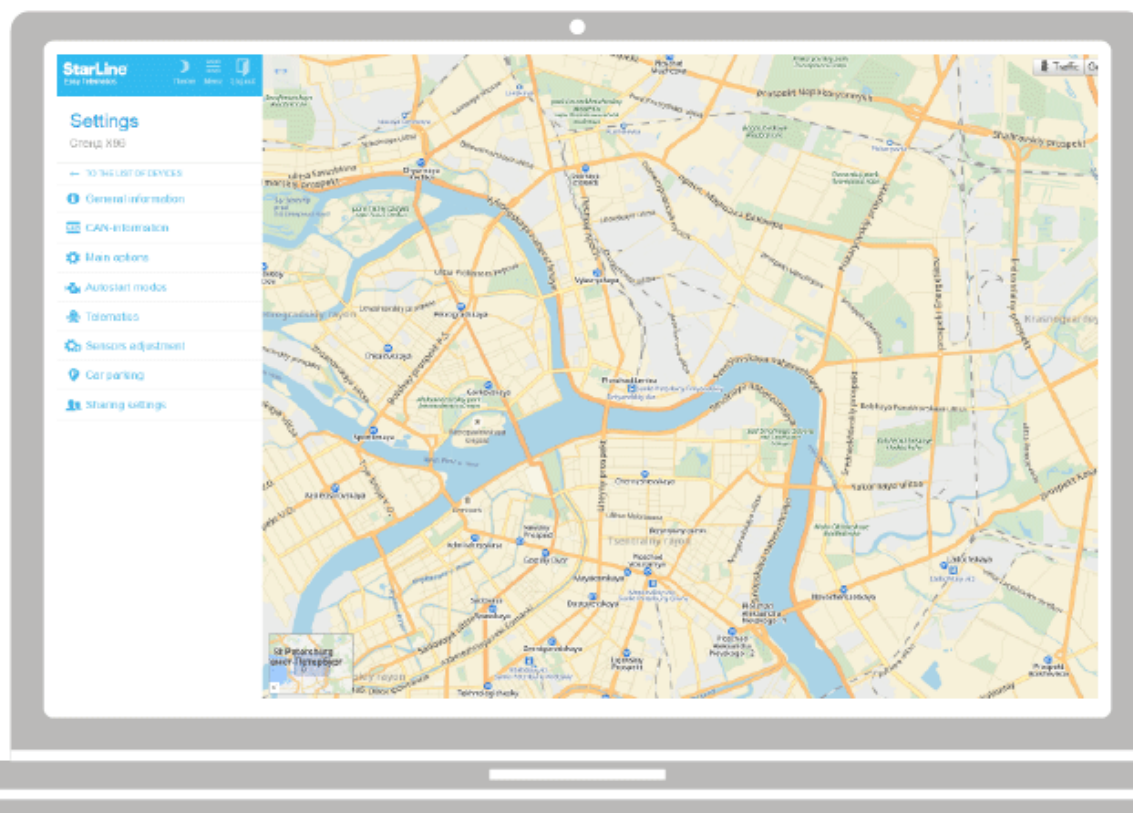
The control commands are given in the table.

SMS command text	Command meaning
10	Deactivate security
O-	
11	Security activation
O+	
12	Security activation without shock sensor
13	Security activation without an additional sensor
14	Security activation without preliminary level of the shock sensor
15	Security activation without tilt sensor and motion sensor
19	Activation of the «Panic» mode
PANIC	
20	Remote engine stopping
D-	
21	Remote engine starting
D+	
220	Switch off of the starting pre-start engine heater
221	Switch on of the starting pre-start engine heater

SMS command text	Command meaning
30 XXXX	Deactivation of the «Anti hijack» mode, where xxxx is the code of emergency security deactivation is given on the owner's plastic card
A-XXXX	
31	Activation of «Anti hijack» mode
A+	
40	Car coordinate request
GPS	
41	Car state request
AUTO	
45	Request about the state of GSM/GPRS connection and balance data
BALANCE	
MONEY	
50	Deactivation of the service mode
S-	
51	Activation of the service mode
S+	
70	Deactivation of the «Hands free mode»
R-	
71	Activation of the «Hands free mode»
R+	

Change settings

Change of user settings is available in the personal account on the website starline.online.



Registration of tags and smartphones

Use the «Device registration» mode for registration of new tags and smartphones.

To prevent unauthorized adding of new components, entry in the device registration mode is possible only from the «Security off» mode.

Tags and smartphones shall be registered in one cycle. At registration of new tags and smartphones all previous tags and smartphones will be deleted from memory. It will be necessary to register them again. In total, up to 5 devices can be registered in the complex.

Entry in the device registration mode

1. Deactivate complex security.



2. Switch off ignition (if it is on).

Off



3. Press the service button 7 times.

Press
7 times



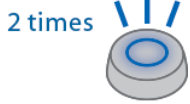
4. Switch on the ignition. 7 light signals on the service button will follow.

On



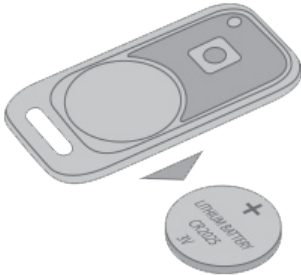
Confirming
signals will follow

5. Entry in the registration mode will be confirmed by 2 short LED signals.



Tag registration

1. Remove the battery from the tag.



2. Удерживайте кнопку метки и установите элемент питания. Светодиод метки загорится красным цветом.



3. Release the button and check presence of a series of red flashes for 10 seconds.



4. Successful registration will be confirmed by a green flash and 2 LED signals. If the tag was not registered, the LED will light up red.



5. Repeat items 1-3 for the remaining tags.

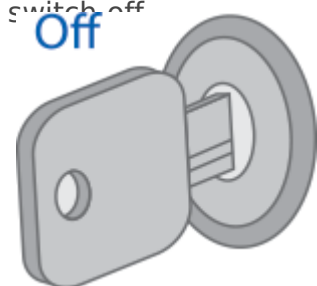
Smartphone registration

Register the smartphone using the StarLine mobile application (see the application menu «Smartphone as a tag»).



Exit from the device registration mode

Exit from the device registration mode is performed automatically in 5 minutes or at ignition switch off



Exit from the “Device registration” mode will be confirmed by 2 LED signals and by signals the number whereof corresponds to the total number of registered tags and smartphones.

After registration, an SMS message with the list of registered devices will be sent to the owner’s telephone.

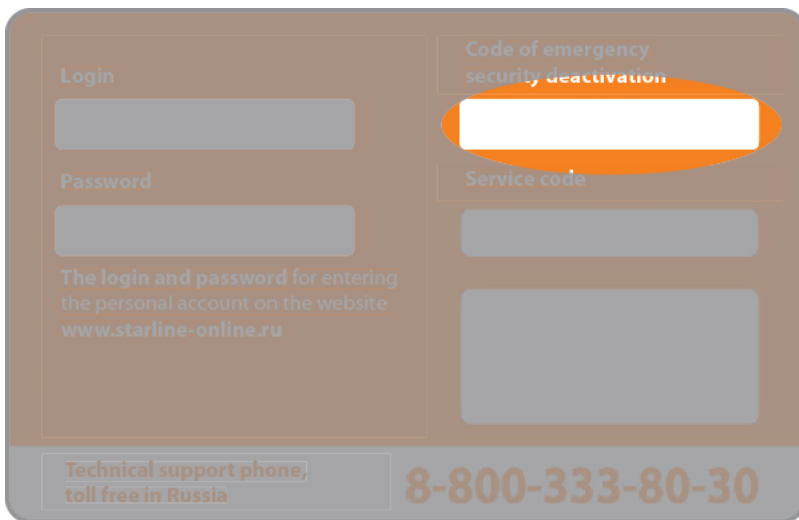
Registration of StarLine R4 code relay

If the code relay StarLine R4 was purchased separately, it must be registered in the memory of the main unit, having first connected it according to the instruction:

1. Disarm the security system. Turn off the ignition if it was on.
2. Connect the OUTPUT and INPUT wires of the code relay to each other.
3. Apply power (BAT and GND wires).
4. Press the service button 7 times.
5. Turn on the ignition.
6. There will be 7 signals from the LED and the siren.
7. Then there will be 2 signals from the LED and the siren, indicating entry into registration mode.
8. Successful registration will be confirmed by a brief activation of the built-in StarLine R4 relay.
9. Turn off the ignition and disconnect the OUTPUT and INPUT wires.

Emergency security deactivation

If the tag was lost, the tag battery has discharged, there is no access to the mobile application or the «Anti hijack» mode is on, use the code of emergency security deactivation given on the plastic card.

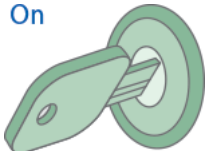


The screenshot shows a web interface with a brown background. On the left, there are fields for 'Login' and 'Password', with a note below them: 'The login and password for entering the personal account on the website www.starline-online.ru'. On the right, there are fields for 'Code of emergency security deactivation' (highlighted with an orange oval) and 'Service code'. At the bottom, there is a footer with the text 'Technical support phone, toll free in Russia' and the phone number '8-800-333-80-30'.

Do the following to deactivate complex security:

1. Switch on the ignition. The «Alarm» mode is activated.

On



2. Press the service button the number of times corresponding to the first digit of the code of emergency security deactivation.

Press
X times

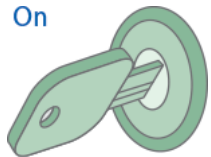


X - the first digit
of the code
of emergency
security deactivation

3. Switch on ignition or wait for 5 seconds. The LED on the service button will light up, the number of flashes will correspond to the ordinal number of the digit of the code of emergency security deactivation (1,2, 3 or 4 times).



4. Switch on the ignition.
On



5. Repeat items 2-4 for the remaining code digits.

If the code of emergency security deactivation is entered correctly, 3 short sound signals of the horn and 3 flashes of light signals will follow. The complex will set to the «Security off» mode.

If the code of emergency security deactivation is entered incorrectly 3 times, the possibility of repeated code entry will be blocked for 15 minutes and an SMS-notification will be sent to the owner's telephone.

An attempt at digit entry will be indicated by 5 LED flashes.

Example of entry of code 5342

	on		off		on	off		on	off	
Ignition										
Press the service button		5 times			3 times			4 times		
Flashes of the service button			1 time			23 times				times

	on		off		on	
Ignition						
Press the service button		2 times				
Flashes of the service button			4 times			3 times

Change of owner authorization code

The owner code is used for user authorization by means of the standard car buttons.

Do as follows to change the owner authorization code:

1. Deactivate complex security.



2. Switch off ignition (if it is on).

Off



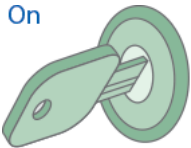
3. Press the service button 7 times.

Press
7 times



4. Switch on the ignition. 7 light signals of the LED on the service button will follow. Entry in the registration mode will be confirmed by 2 short signals of the LED on the service button.

On



Confirming
signals will follow

5. Enter a new owner authorization code using the standard car buttons with pressing interval not more than 3 seconds. Each pressing of the standard button will be accompanied with a single light signal on the service button.

Press the standard
car buttons



The owner authorization code consists of a code sequence, containing from 5 to 30 pressings of the standard buttons. The list of standard buttons supported by the car is given on the website can.starline.ru

If a light signal does not follow after pressing of a standard button, the button is not supported in the given car.

6. In 3 seconds after owner's code entry, 2 short signals of the LED on the service button will follow, confirming code acceptance.

2 times



7. Enter the owner authorization code again.
8. If the code is entered correctly, 2 short signals of the LED on the service button will follow. If the code is entered incorrectly, 4 short light LED signals will follow, in this case repeat items 7 and 8.

2 times



9. In 10 seconds switch off ignition to exit the registration mode.

Off



10. Exit from the registration mode will be confirmed by 2 light signals of the LED on the service button and by signals the number whereof corresponds to the total number of registered tags and smartphones.

Owner authorization code

This section is completed by an installer